

Relationship between hypoxia and downstream pathogenic pathways in preeclampsia

Henri Augusto Korkes^{a,b}, Leandro De Oliveira^b, Nelson Sass^b, Saira Salahuddin^a, S. Ananth Karumanchi^a, and Augustine Rajakumar^a

^aDepartments of Medicine, Obstetrics and Gynecology, Beth Israel Deaconess Medical Center, Harvard Medical School, Boston, Massachusetts, USA; ^bDepartment of Obstetrics, Federal University of São Paulo, São Paulo, Brazil

ABSTRACT

Defects in angiogenesis and mitochondrial function in the placenta contribute to the pathogenesis of preeclampsia; however upstream regulators of these pathways are not known. It has been argued that placental hypoxia secondary to abnormal spiral artery remodeling may play a causal role in the angiogenic and mitochondrial abnormalities noted in preeclampsia. The aim of this study was to evaluate the relationship between hypoxia-inducible factor-1 α (HIF-1 α), a surrogate of hypoxia, and soluble fms-tyrosine kinase 1 (sFlt1), a circulating anti-angiogenic factor, and microRNA 210 (miR-210), a microRNA that regulates mitochondrial function, in human placentas from preeclamptic and non-hypertensive pregnancies. We first confirmed a 2.5-fold upregulation of HIF-1 α protein in placentas from preeclampsia when compared to non-hypertensive controls. Consistent with prior studies, we also observed a 10-fold upregulated sFlt1 mRNA and 2-fold upregulated miR-210 in preeclamptic tissue. Interestingly, while sFlt1 mRNA correlated with miR-210 in preeclampsia ($R^2 = 0.77$, $p = 0.0004$), there were no significant correlations between these molecules and HIF1 α expression. We conclude that non-hypoxia pathways may be involved in the abnormal angiogenic and metabolic alterations noted in preeclampsia.

ARTICLE HISTORY

Received 5 October 2016
Accepted 7 November 2016

KEYWORDS

HIF-1 α protein; miR-210; placenta; preeclampsia; pregnancy; sFlt1

Introduction

Preeclampsia (PE) complicates ~5% of human pregnancies, and together with its infrequent sequel, eclampsia, is a leading cause of maternal deaths directly due to pregnancy (1,2). It is diagnosed with new-onset hypertension after the 20th week of gestation associated with significant proteinuria (3) or, in the absence of proteinuria, when in association with thrombocytopenia, impaired liver function, the new development of renal insufficiency, pulmonary edema, or new-onset cerebral or visual disturbances (4). Abnormalities in placental expression of anti-angiogenic factors and mitochondrial dysfunction have been reported to play a key role in the pathogenesis of the disease (5,6). Although many abnormalities in angiogenesis have been described in preeclampsia, upregulated soluble-fms like tyrosine kinase (sFlt1), a circulating anti-angiogenic factor, has emerged as a major pathway that contributes to the maternal syndrome of preeclampsia (7). Mitochondrial dysfunction, thought to play a key

role in oxidative stress observed in preeclampsia has also been evaluated as a major therapeutic target in preeclampsia (8).

Placental hypoxia has long been hypothesized as a key mechanism that leads to PE (9). Reduced placental perfusion, resulting in fewer spiral arteries both in number and modification, leads to placental hypoxia. Although hypoxia has not been formally demonstrated in PE tissues, up-regulation of hypoxia-inducible factor-1 (HIF-1), a transcription factor and a master regulator of the cellular response to low oxygen tension, has been noted in preeclamptic tissues (10,11). HIF-1 α is rapidly inactivated and degraded during normoxia. But, under hypoxic conditions, stabilized HIF-1 α combines with HIF-1 β , a constitutively expressed protein to form the HIF-1 heterodimer, which binds to the hypoxia-responsive element of various genes, modulating their expression levels (12). Gene expression changes in the placenta have also confirmed upregulation of hypoxia related pathways during PE (13). Placental expression of hypoxia related proteins reflects the gestational oxygen

CONTACT Augustine Rajakumar, PhD ✉ Augustine.rajakumar@emory.edu 📍 Department of Gynecology and Obstetrics, Emory University School of Medicine, Rm 4305 WMB, 101 Woodruff Circle, Atlanta, GA 30322, USA.

Present address: Leandro De Oliveira, Department of Gynecology and Obstetrics São Paulo State University – Botucatu Medical School
Present address: Augustine Rajakumar, Department of Gynecology and Obstetrics, Emory School of Medicine, Atlanta, GA USA

levels, being elevated in early pregnancy and decreasing toward the term (14). Prior studies suggest that PE placentas show a 2-fold increase in HIF-1 α protein levels, however whether this is a cause or effect of the disease is still being debated (15–17).

PE placentas produce excess soluble VEGF receptor, sFlt1 (7,18), and micro RNA miR-210, a hypoxia inducible microRNA, which has been implicated in mitochondrial dysfunction (19,20). Circulating sFlt-1 levels are increased prior to the onset of PE, are altered in most women with severe PE, and correlate with adverse maternal and neonatal outcomes related to PE (21–23). Cell culture studies suggest that hypoxia may promote upregulation of both sFlt1 and miR-210 (19,24). Uteroplacental ischemia in pregnant rats and baboons leads to preeclampsia-like manifestations accompanied by increases in circulating sFlt1 (25–28). However, sFlt1 and other vasoconstrictive substances elevated in humans with PE may impair blood flow to the uteroplacental unit and induce placental ischemia. A strong correlation of circulating angiogenic factors with uterine artery Doppler findings in humans is consistent with this hypothesis (29).

The aim of this study was to evaluate the relationship between HIF-1 α and pathogenic biomarkers of PE, sFlt1, and miR-210, in human placentas from preeclamptic and non-hypertensive control pregnancies.

Methods

Placental collection and processing

Placentas were collected from normal and PE subjects ($n = 11$ in each group) in accordance with all institutional policies and with the approval of the institutional review board at the Beth Israel Deaconess Medical Center (Boston, MA, USA). The diagnosis of PE was based on the updated criteria of the American College of Obstetrician and Gynecology Task force on Hypertension in Pregnancy (4). Patients with history of diabetes, chronic hypertension, renal disease or multiple gestations were excluded. We excised placental biopsies (2×2 cm) without basal and chorionic plates and dabbed with a cotton gauze to remove blood and debris. These tissue samples were flash-frozen in liquid nitrogen within half an hour of placental delivery.

Protein extraction and Western blot analysis

For the total protein extraction, placental samples (~50 mg) were homogenized by sonication (Fisher Scientific Model 120 Sonic Dismembrator,

microprobe, setting 70 for 45s) in 4 volumes of 1X Laemmli buffer containing phenyl-methyl sulfonyl fluoride, sodium vanadate, and f protease inhibitor cocktail (Calbiochem, Billerica, MA). The total proteins from these placentas were isolated and used in western blot analysis as described previously (15). For the detection of hypoxia inducible transcription factor 1 alpha (HIF-1 α) protein, 100 μ g of the total protein was subjected to protein electrophoresis on an 8% SDS-polyacrylamide gel and western blots performed as described previously (14,15). HIF-1 α monoclonal antibodies (Cat. H72320, Transduction Laboratories, Lexington, KY) at a final concentration of 1.25 μ g/ml in Tris-buffered saline buffer containing 0.05% Tween-20 and 5% non-fat dry milk. The mouse monoclonal β -actin antibodies (Sigma Chemical Company, St Louis, MO, Cat. A 5441) were diluted 1:1000 yielding a final concentration of 2.2 μ g/ml. We performed densitometry using the UN SCAN_IT software (Silk Scientific Inc., Orem, Utah).

RNA extraction and real-time quantitative PCR

The total RNA was extracted using the acid guanidinium thiocyanate-phenol-chloroform extraction technique (AGPC) with Trizol (Invitrogen, Carlsbad, California) and their concentrations were determined using a ND-1000 Spectrophotometer (NanoDrop Technologies, Wilmington, Delaware).

Taqman[®] quantitative real-time PCR (qRT-PCR) was performed for the quantitation of the total sFlt1 (all isoforms of sFlt1 and Flt1, Applied Biosystems Hs01052961_m1) and micro RNA miR-210 (Applied Biosystems has-miR-210 id # 000512), between control and preeclamptic placentas. To perform reverse transcription (RT), 5 μ L RNA sample was added to 3 μ L 5X RT primer and 7 μ L RT reaction master mix for a total volume of 15 μ L as recommended by the manufacturer (Applied Biosystems). To prepare the quantitative PCR (qPCR) reaction mix, 1.33 μ L product from RT reaction, 1 μ L TaqMan small RNA assay, and 10 μ L TaqMan master mix (Applied Biosystems) were combined with nuclease-free water in a well on the reaction plate for a total volume of 20 μ L. The real-time PCR reactions were read and analyzed using a 7900HT Sequence Detection System (Applied Biosystems). β -actin and RNU-49 were used as loading controls.

Statistical analyses

Statistical analyses were performed using the Graphad software. The Student t-test was used to analyze controls versus PE. The p value of less than 0.05 was

considered to be significant. We calculated Pearson's correlation coefficients to determine the strength of association between various analytes.

Results

Clinical characteristics of the study population

Table 1 shows the clinical characteristics of the patient population in the study. The PE group delivered earlier and did not, surprisingly, have higher blood pressures and proteinuria. The maternal ages were similar in both groups.

Biomarker levels

HIF-1 α protein levels were significantly increased in PE placentas, 32679 ± 2170 when compared to controls 12904 ± 1857 ($p < 0.0001$, Figure 1A and B) as detected by Western blot analyses. This 2.5-fold increase in HIF-1 α is consistent with previous findings that demonstrated that PE placentas have stabilized HIF protein expression (15,30).

We then estimated the transcript levels of sFlt1 and miR-210 genes in the same placental cohort using real-time PCR. Consistent with prior studies, we found that PE placentas significantly demonstrated increased sFlt1 mRNA compared to controls, 14.70 ± 3.605 vs 1.047 ± 0.1065 fold, respectively ($p = 0.0012$, Figure 2A). In accordance with the published reports (19,20), we also found increased miR-210 levels in PE placentas compared to controls, 2.737 ± 0.4714 vs 1.125 ± 0.1645 , respectively ($p = 0.0042$, Figure 2B).

Correlation among the PE biomarkers

To evaluate the relationship between HIF-1 α and these PE biomarkers, we performed correlation analyses between placental HIF protein expression and sFlt1

and miR-210 expression in both control and PE placental samples (Figure 3). There was no correlation between the HIF-1 α and sFlt1 levels in controls and PE placentas (HIF-1 α vs sFlt1; $R^2 = 0.05$ in controls and 0.003 in PE). Likewise, there was no correlation between the HIF-1 α and miR-210 levels in controls and PE placentas ($R^2 = 0.02$ in control and PE). In contrast, PE biomarkers, sFlt1 and miR-210, correlated modestly in controls ($R^2 = 0.27$) and robustly in PE ($R^2 = 0.77$, $p = 0.0004$, Figure 3).

Discussion

Here, we demonstrate that while both hypoxia inducible genes, sFlt1 and miR-210, are upregulated in PE, we

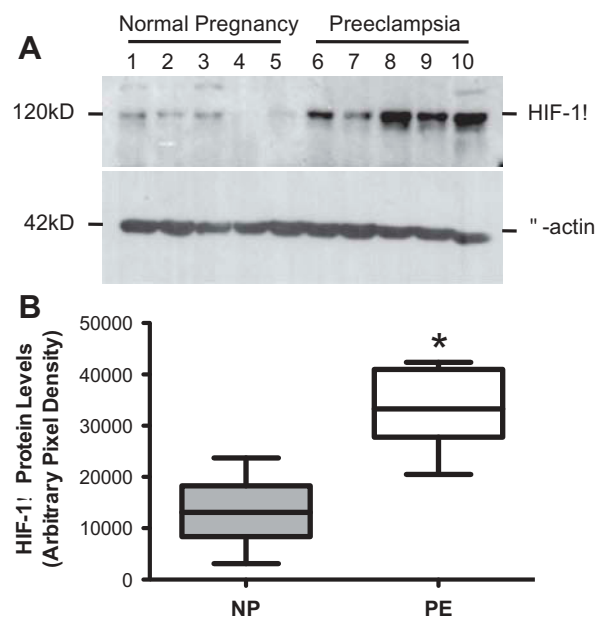


Figure 1. HIF-1 α expression in control and PE placentas. A representative Western blot of HIF-1 α protein expression in placentas from five controls (Lanes 1–5) and five PE (Lanes 6–10) is presented in Figure 1. Quantitation of HIF-1 α expression ($n = 11$ in each group) is shown in the bottom panel. * represents $p = 0.0001$, PE vs controls.

Table 1. Clinical characteristics of subjects.

	Controls ($n = 11$)	Preeclampsia ($n = 11$)
Mothers age (years)	34.36 ± 1.5	31.6 ± 1.63
Gestational age (weeks)	38.77 ± 0.3	$33.2 \pm 1.03^*$
Race	Caucasian 73%, African American 18.0%, Asian 9.0%	Caucasian 64%, African American 9%, Asian 18%, mixed 9%
Systolic BP mmHg (at delivery)	118 ± 2.73	$172.5 \pm 4^*$
Diastolic BP (mmHg) (at delivery)	70.4 ± 1.45	$104.7 \pm 8.9^*$
Proteinuria	N/A	100%
Fetal growth restriction	0/11	2/11
C-section	11/11	7/11

* represents $p < 0.05$

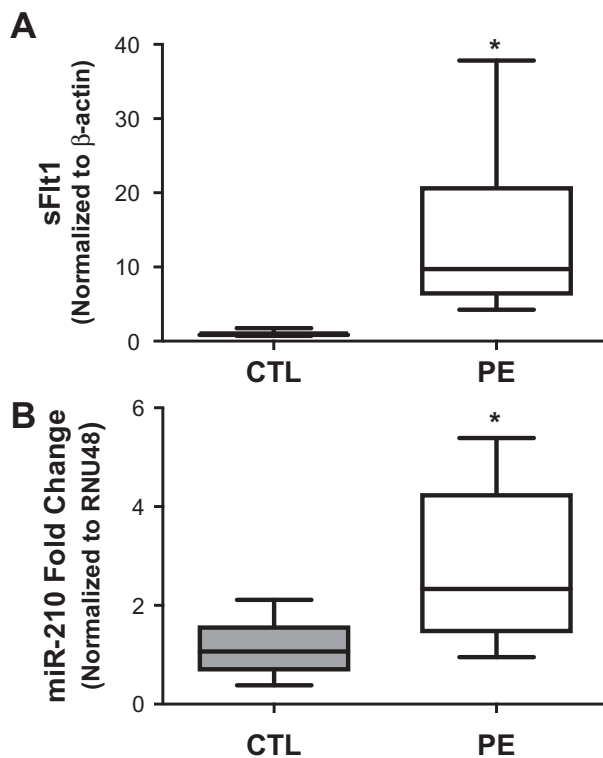


Figure 2. sFlt1 and miR-210 expression in control and PE placentas. (A) Total sFlt1 mRNA levels were estimated by real-time PCR and the values were normalized to β -actin and summary results from controls ($n = 11$) and PE ($n = 11$) are depicted. * represents $p = 0.0012$, PE vs controls. (B) miR-210 levels were estimated by real-time PCR and values were normalized to RNU gene and summary results from controls ($n = 11$) and PE ($n = 11$) are depicted. * represents $p = 0.0042$, PE vs controls.

found no correlation for these analytes with HIF1 α expression in the placenta. HIF-1 α is a well-established surrogate of hypoxia and has been consistently reported to be elevated in humans with PE. Several *in vitro* studies and *in vivo* studies in rodents have suggested that placental hypoxia and increased HIF-1 α proteins may be sufficient to induce sFlt1 and miR-210 upregulation (19,24,26,28). In contrast, some have argued that defects in placental trophoblast differentiation may be the primary abnormality and that placental hypoxia may not be critical for the development of PE (31). Taken together with our studies, we conclude that while hypoxia may induce sFlt1 and miR-210 expressions, it is unlikely to be a major driver of these angiogenic and metabolic abnormalities noted in humans with PE.

It has been argued that the hypoxic environment of the placenta causes overexpression of HIF-1 α proteins by about 2-fold. HIF-1 α , a regulator of the cellular response to low oxygen tensions, is essential for the maintenance of cellular homeostasis. Several groups established evidence and the role of HIF-1 α in pregnancy and their possible

involvement in the pathogenesis of PE (14,32–34). However, PE is also characterized by abnormal placental perfusion, suggesting that the placental up-regulation of HIF-1 α may be secondary to impaired flow abnormalities noted in these patients. Similarly, an association between miR-210 and HIF-1 α has been described as a form of positive feedback. In this model, the increased expression of miR-210 in hypoxia may promote HIF-1 α stability. This is facilitated by blocking of the glycerol-3-phosphate dehydrogenase 1-like enzyme (GPD1L) by miR-210. Accordingly, miR-210 may stabilize HIF-1 α (35). Zhang et al. found high levels of miR-210 in placentas of patients with PE (20), and reported that it interferes with trophoblast invasion. Xu et al. have also shown that several miRNAs up-regulated in PE placentas are produced by various subtypes of trophoblasts including villous cytotrophoblast cells, syncytiotrophoblasts, column cytotrophoblast cells, and interstitial trophoblast cells invading the decidual stroma (36). This altered miRNA expression along with the reduced mitochondrial respiration (19) suggests the possibility of a functional role for miRNA-210 in the pathogenesis of PE (37). In our results, miR-210 correlated weakly with the expression of HIF-1 α suggesting a lack of the direct relationship between these two molecules, at least in placental tissues. In contrast, miR-210 was strongly correlated with sFlt1 expression during PE, suggesting that both these pathways may have a common upstream regulator.

Our study has some limitations. HIF-1 α expression rapidly changes following exposure to normoxia. To minimize the variability of the HIF-1 α expression, we snap froze placental tissues in liquid nitrogen within 30 minutes of delivery, however, we cannot rule out the possibility that changes in oxygen concentrations *ex vivo* may have affected HIF expression. It was reassuring to us that PE tissues consistently demonstrated HIF upregulation and therefore believe that our studies are valid. Our study was also limited by sample size. PE was believed to be a very heterogeneous disorder and therefore we cannot exclude the possibility that HIF-1 α overexpression may play a role in certain sub-types of PE.

The etiology of the abnormal placentation in PE is still being debated. Various pathways have been proposed to have key roles in inducing placental disease, including deficient heme oxygenase expression, impaired corin expression, autoantibodies against the angiotensin receptor, oxidative stress, inflammation, altered natural killer cell signaling, and deficient catechol-*O*-methyl transferase (5). Interestingly, most of these pathways were shown to increase placental production of the antiangiogenic factors *in vitro* or in animal studies. However, the etiology of the abnormal angiogenic and metabolic dysfunction in

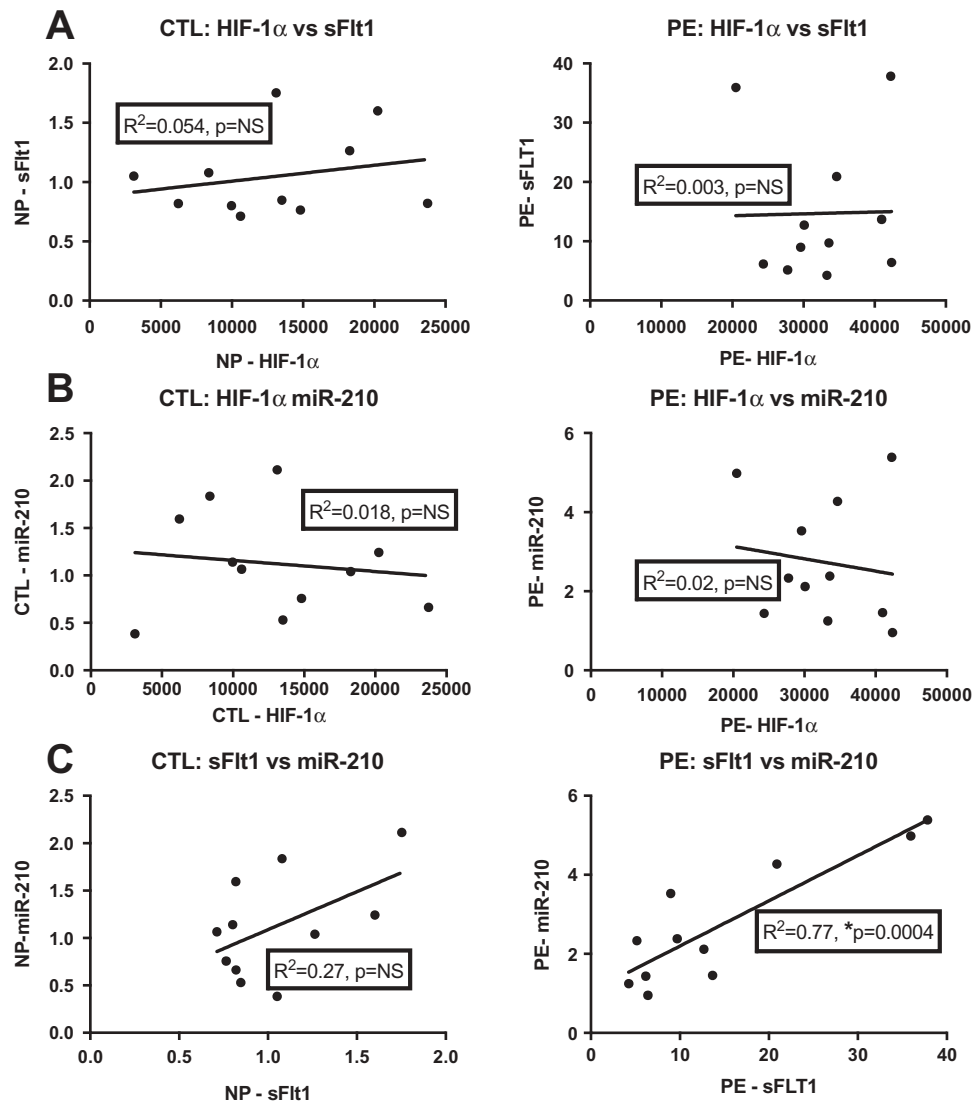


Figure 3. Correlation between HIF-1 α and PE biomarkers. (A) Correlation plot for HIF1 α levels vs sFlt1 levels in controls (left) and PE (right) are depicted. (B) Correlation plot for HIF1 α levels vs miR-210 levels in controls (left) and PE (right), ©. Correlation plot for sFlt1 levels vs miR-210 levels in controls (left) and PE (right) are depicted.

humans with PE is still being debated. Further studies are needed to evaluate the role of these non-hypoxic pathways in humans to determine key drivers of placentation abnormalities that lead to the maternal syndrome of PE.

Disclosures

Dr. Karumanchi is a co-inventor of patents related to preeclampsia biomarkers that are held by Beth Israel Deaconess Medical Center. S.A.K. has financial interest in Aggamin LLC and reports serving as a consultant to Siemens Diagnostics, Roche and ThermoFisher.

References

1. Cantwell R, Clutton-Brock T, Cooper G, et al. Saving Mothers' Lives: Reviewing maternal deaths to make motherhood safer: 2006–2008. The Eighth Report of the Confidential Enquiries into Maternal Deaths in the United Kingdom. *BJOG*;118(Suppl 1):1–203.
2. Duley L. The global impact of pre-eclampsia and eclampsia. *Semin Perinatol* 2009;33:130–137.
3. Warrington JP, George EM, Palei AC, et al. Recent advances in the understanding of the pathophysiology of preeclampsia. *Hypertension* 2013;62:666–673.
4. American College of Obstetricians, Gynecologists, and Task Force on Hypertension in P. Hypertension in pregnancy. Report of the American College of Obstetricians and Gynecologists' Task Force on Hypertension in Pregnancy. *Obstet Gynecol* 2013;122:1122–1131.
5. Powe CE, Levine RJ, Karumanchi SA. Preeclampsia, a disease of the maternal endothelium: the role of anti-angiogenic factors and implications for later cardiovascular disease. *Circulation* 2011;123:2856–2869.
6. Wang Y, Walsh SW. Placental mitochondria as a source of oxidative stress in pre-eclampsia. *Placenta* 1998;19:581–586.

7. Maynard SE, Min JY, Merchan J, et al. Excess placental soluble fms-like tyrosine kinase 1 (sFlt1) may contribute to endothelial dysfunction, hypertension, and proteinuria in preeclampsia. *J Clin Invest* 2003;111:649–658.
8. McCarthy C, Kenny LC. Therapeutically targeting mitochondrial redox signalling alleviates endothelial dysfunction in preeclampsia. *Sci Rep* 2016;6:32683.
9. Genbacev O, Zhou Y, Ludlow JW, Fisher, SJ. Regulation of human placental development by oxygen tension. *Science* 1997;277:1669–1672.
10. Semenza GL. HIF-1 and human disease: one highly involved factor. *Genes Dev* 2000;14:1983–1991.
11. Caniggia I, Winter JL. Adriana and Luisa Castellucci Award lecture 2001. Hypoxia inducible factor-1: oxygen regulation of trophoblast differentiation in normal and pre-eclamptic pregnancies—a review. *Placenta* 2002;23(SupplA):S47–S57.
12. Shen C, Nettleton D, Jiang M, et al. Roles of the HIF-1 hypoxia-inducible factor during hypoxia response in *Caenorhabditis elegans*. *J Biol Chem* 2005;280:20580–20588.
13. Soleymanlou N, Jurisica I, Nevo O, et al. Molecular evidence of placental hypoxia in preeclampsia. *J Clin Endocrinol Metab* 2005;90:4299–4308.
14. Rajakumar A, Conrad KP. Expression, ontogeny, and regulation of hypoxia-inducible transcription factors in the human placenta. *Biol Reprod* 2000;63:559–569.
15. Rajakumar A, Whitelock KA, Weissfeld LA, et al. Selective overexpression of the hypoxia-inducible transcription factor, HIF-2alpha, in placentas from women with preeclampsia. *Biol Reprod* 2001;64:499–506.
16. Rajakumar A, Whitelock KA, Weissfeld LA, et al. Erratum; Overexpression of Hypoxia inducible transcription factors HIF-1 and 2alphas in placentas from women with preeclampsia. *Biol Reprod* 2001;64:1019–1020.
17. Karumanchi SA, Bdolah Y. Hypoxia and sFlt-1 in preeclampsia: the “chicken-and-egg” question. *Endocrinology* 2004;145:4835–4837.
18. Tsatsaris V, Goffin F, Munaut C, et al. Overexpression of the soluble vascular endothelial growth factor receptor in preeclamptic patients: pathophysiological consequences. *J Clin Endocrinol Metab* 2003;88:5555–5563.
19. Muralimanoharan S, Maloyan A, Mele J, et al. MIR-210 modulates mitochondrial respiration in placenta with preeclampsia. *Placenta* 2012;33:816–823.
20. Zhang Y, Fei M, Xue G, et al. Elevated levels of hypoxia-inducible microRNA-210 in pre-eclampsia: new insights into molecular mechanisms for the disease. *J Cell Mol Med* 2012;16:249–259.
21. Levine RJ, Maynard SE, Qian C, et al. Circulating angiogenic factors and the risk of preeclampsia. *N Engl J Med* 2004;350:672–683.
22. Rana S, Powe CE, Salahuddin S, et al. Angiogenic factors and the risk of adverse outcomes in women with suspected preeclampsia. *Circulation* 2012;125:911–919.
23. Rana S, Karumanchi SA, Lindheimer MD. Angiogenic factors in diagnosis, management, and research in preeclampsia. *Hypertension* 2014;63:198–202.
24. Nagamatsu T, Fujii T, Kusumi M, et al. Cytotrophoblasts up-regulate soluble fms-like tyrosine kinase-1 expression under reduced oxygen: an implication for the placental vascular development and the pathophysiology of preeclampsia. *Endocrinology* 2004;145:4838–4845.
25. Alexander BT, Rinewalt AN, Cockrell KL, et al. Endothelin type a receptor blockade attenuates the hypertension in response to chronic reductions in uterine perfusion pressure. *Hypertension* 2001;37:485–489.
26. Gilbert JS, Babcock SA, Granger JP. Hypertension produced by reduced uterine perfusion in pregnant rats is associated with increased soluble fms-like tyrosine kinase-1 expression. *Hypertension* 2007;50:1142–1147.
27. Gilbert JS, Gilbert SA, Arany M, Granger JP. Hypertension produced by placental ischemia in pregnant rats is associated with increased soluble endoglin expression. *Hypertension* 2009;53:399–403.
28. Makris A, Thornton C, Thompson J, et al. Uteroplacental ischemia results in proteinuric hypertension and elevated sFLT-1. *Kidney Int* 2007;71:977–984.
29. Schlembach D, Wallner W, Sengenberger R, et al. Angiogenic growth factor levels in maternal and fetal blood: correlation with Doppler ultrasound parameters in pregnancies complicated by pre-eclampsia and intrauterine growth restriction. *Ultrasound Obstet Gynecol* 2007;29:407–413.
30. Rana S, Rajakumar A, Geahchan C, et al. Ouabain inhibits placental sFlt1 production by repressing HSP27-dependent HIF-1alpha pathway. *FASEB J* 2014;28:4324–4334.
31. Huppertz B. Placental origins of preeclampsia: challenging the current hypothesis. *Hypertension* 2008;51:970–975.
32. Caniggia I, Mostachfi H, Winter J, et al. Hypoxia-inducible factor-1 mediates the biological effects of oxygen on human trophoblast differentiation through TGFbeta(3). *J Clin Invest* 2000;105:577–587.
33. Genbacev O, Joslin R, Damsky CH, et al. Hypoxia alters early gestation human cytotrophoblast differentiation/invasion in vitro and models the placental defects that occur in preeclampsia. *J Clin Invest* 1996;97:540–550.
34. Maltepe E, Krampitz GW, Okazaki KM, et al. Hypoxia-inducible factor-dependent histone deacetylase activity determines stem cell fate in the placenta. *Development* 2005;132:3393–3403.
35. Kelly TJ, Souza AL, Clish CB, Puigserver P. A hypoxia-induced positive feedback loop promotes hypoxia-inducible factor 1alpha stability through miR-210 suppression of glycerol-3-phosphate dehydrogenase 1-like. *Mol Cell Biol* 2011;31:2696–2706.
36. Xu P, Zhao Y, Liu M, et al. Variations of microRNAs in human placentas and plasma from preeclamptic pregnancy. *Hypertension* 2014;63:1276–1284.
37. Pineles BL, Romero R, Montenegro D, et al. Distinct subsets of microRNAs are expressed differentially in the human placentas of patients with preeclampsia. *Am J Obstet Gynecol* 2007;196:261–266.