

The NEW ENGLAND JOURNAL of MEDICINE

ESTABLISHED IN 1812

OCTOBER 3, 2013

VOL. 369 NO. 14

A Randomized Trial of Planned Cesarean or Vaginal Delivery for Twin Pregnancy

Jon F.R. Barrett, M.B., B.Ch., M.D., Mary E. Hannah, M.D.C.M., Eileen K. Hutton, Ph.D., Andrew R. Willan, Ph.D., Alexander C. Allen, M.D.C.M., B. Anthony Armson, M.D., Amiram Gafni, D.Sc., K.S. Joseph, M.D., Ph.D., Dalah Mason, M.P.H., Arne Ohlsson, M.D., Susan Ross, Ph.D., J. Johanna Sanchez, M.I.P.H., and Elizabeth V. Asztalos, M.D., for the Twin Birth Study Collaborative Group*

ABSTRACT

BACKGROUND

Twin birth is associated with a higher risk of adverse perinatal outcomes than singleton birth. It is unclear whether planned cesarean section results in a lower risk of adverse outcomes than planned vaginal delivery in twin pregnancy.

METHODS

We randomly assigned women between 32 weeks 0 days and 38 weeks 6 days of gestation with twin pregnancy and with the first twin in the cephalic presentation to planned cesarean section or planned vaginal delivery with cesarean only if indicated. Elective delivery was planned between 37 weeks 5 days and 38 weeks 6 days of gestation. The primary outcome was a composite of fetal or neonatal death or serious neonatal morbidity, with the fetus or infant as the unit of analysis for the statistical comparison.

RESULTS

A total of 1398 women (2795 fetuses) were randomly assigned to planned cesarean delivery and 1406 women (2812 fetuses) to planned vaginal delivery. The rate of cesarean delivery was 90.7% in the planned-cesarean-delivery group and 43.8% in the planned-vaginal-delivery group. Women in the planned-cesarean-delivery group delivered earlier than did those in the planned-vaginal-delivery group (mean number of days from randomization to delivery, 12.4 vs. 13.3; $P=0.04$). There was no significant difference in the composite primary outcome between the planned-cesarean-delivery group and the planned-vaginal-delivery group (2.2% and 1.9%, respectively; odds ratio with planned cesarean delivery, 1.16; 95% confidence interval, 0.77 to 1.74; $P=0.49$).

CONCLUSIONS

In twin pregnancy between 32 weeks 0 days and 38 weeks 6 days of gestation, with the first twin in the cephalic presentation, planned cesarean delivery did not significantly decrease or increase the risk of fetal or neonatal death or serious neonatal morbidity, as compared with planned vaginal delivery. (Funded by the Canadian Institutes of Health Research; ClinicalTrials.gov number, NCT00187369; Current Controlled Trials number, ISRCTN74420086.)

From the Department of Obstetrics and Gynaecology (J.F.R.B., M.E.H.), Centre for Mother, Infant, and Child Research, Sunnybrook Research Institute (D.M., J.J.S.), and Department of Newborn and Developmental Paediatrics (E.V.A.), Sunnybrook Health Sciences Centre, the Program in Child Health Evaluative Sciences, SickKids Research Institute, Dalla Lana School of Public Health (A.R.W.), and the Department of Paediatrics, Mount Sinai Hospital (A.O.), University of Toronto, Toronto; the Midwifery Education Program (E.K.H.) and the Department of Clinical Epidemiology and Biostatistics (A.G.), McMaster University, Hamilton, ON; the Departments of Paediatrics (A.C.A.) and Obstetrics and Gynaecology (B.A.A.), Izaak Walton Killam Health Centre, Dalhousie University, Halifax, NS; the Department of Obstetrics and Gynaecology and the School of Population and Public Health, University of British Columbia, Vancouver (K.S.J.); and the Department of Obstetrics and Gynaecology, University of Alberta, Edmonton (S.R.) — all in Canada. Address reprint requests to Dr. Barrett at Sunnybrook Health Sciences Centre, M4-172 2075 Bayview Ave., Toronto, ON M4N 3M5, Canada, or at jon.barrett@sunnybrook.ca.

This article was updated on November 7, 2013, at NEJM.org.

*The members of the Twin Birth Study Collaborative Group are listed in the Supplementary Appendix, available at NEJM.org.

N Engl J Med 2013;369:1295-305.
DOI: 10.1056/NEJMoa1214939

Copyright © 2013 Massachusetts Medical Society

BECAUSE OF ASSISTED REPRODUCTIVE technologies, twin pregnancy occurs more frequently now than in the past, and it complicates 2 to 3% of all births.^{1,2} Twins are at higher risk for an adverse perinatal outcome than singletons.^{3,4} Planned cesarean section, as compared with planned vaginal delivery, may reduce this risk.⁵ Although a small, randomized, controlled trial did not show better perinatal outcomes with planned cesarean section than with planned vaginal delivery,⁶ several cohort studies have shown a reduced risk of adverse perinatal outcomes for both twins, or for the second twin, when twins at or near term were delivered by means of elective cesarean section.⁷⁻¹⁰ Despite the lack of evidence to support a policy of planned cesarean section for twins at or near term, the rates of elective cesarean section for twins have increased in North America and worldwide.^{11,12}

We conducted the Twin Birth Study to compare the risk of fetal or neonatal death or serious neonatal morbidity with two delivery strategies — planned cesarean delivery or planned vaginal delivery with cesarean delivery only if indicated — for twin pregnancies between 32 weeks 0 days and 38 weeks 6 days of gestation, if the leading twin was in the cephalic presentation.

METHODS

STUDY DESIGN

Women were eligible for the study if they had a twin pregnancy between 32 weeks 0 days and 38 weeks 6 days of gestation, the first twin was in the cephalic presentation, and both fetuses were alive with an estimated weight between 1500 g and 4000 g, confirmed by means of ultrasonography within 7 days before randomization. We enrolled women with pregnancies as early as 32 weeks of gestation because many women with twins wish to begin planning the method of delivery at this time and because many twin births are preterm.

Exclusion criteria were monoamniotic twins, fetal reduction at 13 or more weeks of gestation, lethal fetal anomaly, contraindication to labor or vaginal delivery (e.g., fetal compromise, second twin substantially larger than the first twin, fetal anomaly or condition that might cause mechanical problems at delivery, and previous vertical uterine incision or more than one previous low-

segment cesarean delivery), and previous participation in the Twin Birth Study.

STUDY OVERSIGHT

The research ethics committee at each participating center approved the study protocol, which is available with the full text of this article at NEJM.org. The first, second, and last authors take responsibility for the accuracy and completeness of the reported data and for the fidelity of the report to the study protocol. All the women provided written informed consent before being enrolled.

TREATMENT PROTOCOL

Women were randomly assigned to planned cesarean section or planned vaginal delivery. Randomization was centrally controlled at the Centre for Mother, Infant, and Child Research at Sunnybrook Health Sciences Centre in Toronto with the use of a computerized randomization program stratified according to parity (0 vs. ≥ 1) and gestational age (32 weeks 0 days to 33 weeks 6 days, 34 weeks 0 days to 36 weeks 6 days, or 37 weeks 0 days to 38 weeks 6 days), with the use of random block sizes.

Data were abstracted from the medical records at participating centers by trained study staff and were recorded, after delivery, on standardized data-collection forms. Participating centers assessed fetal growth and well-being with the use of ultrasonography at least every 4 weeks and with the use of nonstress or biophysical profile tests twice weekly if needed; were prepared to perform a cesarean section within 30 minutes if necessary; and had anesthetic, obstetrical, and nursing staff available in the hospital at the time of planned vaginal delivery.

Elective delivery by means of either cesarean section (for women in the planned-cesarean group) or labor induction (for women in the planned-vaginal-delivery group) was planned between 37 weeks 5 days and 38 weeks 6 days of gestation, because evidence suggested that perinatal outcomes would be best during this gestational-age window.¹³⁻¹⁵ If the first twin was delivered vaginally in a woman in the planned-cesarean group, a cesarean section was attempted for the second twin, if logistically possible. For women with a planned vaginal delivery, we anticipated that more than 60% would deliver both twins vaginally.¹⁶ The pregnancy was reassessed at the time of la-



A Quick Take animation is available at NEJM.org

bor, and if there was a contraindication to labor or vaginal delivery, a cesarean delivery was undertaken. If labor was induced, standard methods were used, but prostaglandins were not recommended for women who had previously undergone a cesarean section.

Continuous electronic monitoring of the fetal heart rate was recommended during active labor. The use of oxytocin to augment labor and the use of epidural analgesia were left to the discretion of the obstetrician. After the delivery of the first twin, the use of ultrasonography was encouraged in order to check the presentation of the second twin. If the second twin was in the cephalic presentation, amniotomy was delayed until the fetal head was engaged and spontaneous vaginal delivery was anticipated, unless a nonreassuring fetal status required the use of forceps or vacuum extraction. If the second twin was not in the cephalic presentation, the obstetrician decided on the best delivery option (spontaneous or assisted vaginal breech delivery, total breech extraction with or without internal podalic version, external cephalic version and vaginal cephalic delivery, or intrapartum cesarean section).

Women having a vaginal delivery were attended by a qualified obstetrician who was experienced at vaginal twin delivery, defined a priori as an obstetrician who judged himself or herself to be experienced at vaginal twin delivery and whose department head agreed with this judgment.^{17,18} Before beginning recruitment at each center, we assigned a code number to qualified obstetricians who were considered to be experienced at vaginal twin delivery, and we recorded information about their qualifications and years of experience with vaginal twin delivery. Similar information was collected for other clinicians who were present at delivery.

Infants received positive-pressure ventilation with endotracheal intubation, oxygen, intravenous therapy, blood transfusion, surfactant, or a combination of these therapies if needed at the time of birth. Intracranial pathological findings were assessed with the use of neonatal ultrasonography if clinically indicated.

OUTCOMES

For the present analysis, mothers and infants were followed until 28 days after delivery. The primary outcome was a composite of fetal or

neonatal mortality or serious neonatal morbidity. Neonatal mortality was assessed for the period from 0 to 27 days after birth. Serious neonatal morbidity was defined as one or more of the following: birth trauma (spinal cord injury, basal or depressed skull fracture, fracture of a long bone [humerus, radius, ulna, femur, tibia, or fibula]; injury to a peripheral nerve [brachial plexus or phrenic or facial nerve] present at 72 hours of age or at discharge from the hospital; subdural or intracerebral hemorrhage confirmed by mean of ultrasonography, computed tomography [CT], or magnetic resonance imaging [MRI]); Apgar score of less than 4 at 5 minutes; coma, stupor, or decreased response to pain; seizures on at least two occasions before 72 hours of age; need for assisted ventilation with the use of an endotracheal tube, inserted within 72 hours after birth and remaining in place for at least 24 hours; septicemia confirmed by means of blood culture or meningitis confirmed by means of cerebrospinal fluid culture within 72 hours after birth; necrotizing enterocolitis, defined as intestinal perforation, pneumatosis intestinalis, or air in the portal vein diagnosed by means of surgery or radiography; bronchopulmonary dysplasia, defined as the need for supplemental oxygen at a postnatal gestational age of 36 weeks and confirmed by means of radiography; grade III or IV intraventricular hemorrhage confirmed by means of ultrasonography; or cystic periventricular leukomalacia confirmed by means of ultrasonography. Data for infants with the primary outcome events were adjudicated, with masking of the assigned group and (if possible) the method of delivery, by an adjudication committee.

Another outcome was a composite of maternal death or serious maternal morbidity before 28 days post partum, defined as one or more of the following: death; hemorrhage (blood loss ≥ 1500 ml, need for blood transfusion, or need for dilation and curettage after delivery); laparotomy; genital tract injury (need for hysterectomy; vulvar or perineal hematoma requiring evacuation; broad-ligament hematoma confirmed by means of ultrasonography, CT, or MRI; intraoperative damage to the bladder, ureter, or bowel requiring repair; fistula involving the genital tract; or third-degree or fourth-degree perineal laceration involving the anal sphincter or mucosa); thromboembolism (deep-vein thrombosis, thrombophlebitis, or pul-

monary embolism) requiring anticoagulant therapy; systemic infection (temperature $\geq 38.5^{\circ}\text{C}$ on two or more occasions at least 24 hours apart, not including the first 24 hours after delivery, or pneumonia confirmed by means of radiography or, if there was sepsis, confirmed by means of blood culture); major medical life-threatening illness (the acute respiratory distress syndrome, amniotic-fluid embolism, disseminated intravascular coagulation, bowel obstruction, or paralytic ileus requiring the use of nasogastric suctioning); wound infection requiring prolongation of the hospital stay, readmission to the hospital, or repeated treatment as an outpatient; wound dehiscence or breakdown; or other serious maternal complication. Adverse events other than predefined measures of morbidity were to be reported to the independent data and safety monitoring board.

Secondary outcomes to be reported subsequently included death or a poor neurodevelopmental outcome among the children at 2 years of corrected age and problematic urinary, fecal, or flatal incontinence among the mothers at 2 years postpartum. Other maternal outcomes included satisfaction with the method of delivery, breast-feeding, quality of life, fatigue, and depression (see the Supplementary Appendix, available at NEJM.org).

STATISTICAL ANALYSIS

We calculated that a sample of 2800 pregnancies (5600 twins) was required in order to detect a reduction in the risk of the composite primary outcome of fetal or neonatal death or serious neonatal morbidity from 4% (on the basis of data from the Nova Scotia Atlee Perinatal Database regarding rates of adverse outcomes for twins with vaginal delivery or emergency cesarean section) to 2% with a policy of planned cesarean delivery, with 80% power and a two-sided type I error of 0.05, allowing for a 10% rate of crossover between groups.

Two interim analyses were performed and reviewed by the data and safety monitoring board. The first interim analysis included data from the first 1000 women who underwent randomization, and the second included data from the first 1800 women who underwent randomization.

Fetal or neonatal death and maternal death were excluded from the analyses of neonatal and maternal morbidity, respectively. Odds ratios and 95% confidence intervals for the composite primary outcome with planned cesarean delivery, as compared with planned vaginal delivery, were calculated with the use of a logistic model

with the fetus or infant as the unit of analysis and generalized estimating equations to account for the correlation between the two fetuses or infants from the same pregnancy.^{19,20}

Two models were fitted: one with treatment group alone and another with treatment group and the stratification variables of parity and gestational age at randomization. A two-sided P value of 0.05 or less was considered to indicate statistical significance for the composite primary outcome. Since a very stringent level of significance (a two-sided P value of <0.002) was used for the interim analyses, no adjustment for the final analysis was deemed necessary. Standard logistic-regression models were used to compare treatment groups with respect to the maternal composite outcome. Statistical significance was set at a two-sided P value of less than 0.01 for the maternal composite outcome. Although not planned a priori, two-sample t-tests were used to compare treatment-group means with respect to gestational age at delivery, time from randomization to delivery of the first twin, and the interval between the twin deliveries. For these analyses, a two-sided P value of less than 0.05 was considered to indicate statistical significance.

Planned subgroup analyses for the primary outcome were conducted by testing the interaction term between the treatment group and the following baseline variables: parity (0 vs. ≥ 1), gestational age at randomization (32 weeks 0 days to 33 weeks 6 days, 34 weeks 0 days to 36 weeks 6 days, or 37 weeks 0 days to 38 weeks 6 days), maternal age (<30 years vs. ≥ 30 years), presentation of the second twin (cephalic vs. noncephalic), chorionicity (dichorionic vs. monochorionic), and the national perinatal mortality in the mother's country of residence (<15 deaths per 1000 births, 15 to 20 deaths per 1000 births, or >20 deaths per 1000 births)²¹ (Table 1).

RESULTS

CHARACTERISTICS OF THE PARTICIPANTS

Between December 13, 2003, and April 4, 2011, we enrolled 2804 women at 106 centers in 25 countries. A total of 1398 women were randomly assigned to planned cesarean section and 1406 to planned vaginal delivery. The numbers of women recruited in each country are provided in the Supplementary Appendix. Outcome data were available for 1392 women (2783 fetuses or infants) in the planned-cesarean-delivery group and for

Table 1. Characteristics of Women and Their Pregnancies at Baseline.*

Characteristic	Planned Cesarean Delivery (N=1393)	Planned Vaginal Delivery (N=1393)
Maternal age ≥30 yr — no. (%)	632 (45.4)	632 (45.4)
Parity ≥1 — no. (%)	857 (61.5)	856 (61.5)
Previous cesarean section — no. (%)	100 (7.2)	97 (7.0)
Gestational age at randomization		
Mean — wk	34.9±1.8	34.9±1.8
<32 wk 0 days — no. (%)	0	1 (0.1)
32 wk 0 days to 33 wk 6 days — no. (%)	475 (34.1)	477 (34.2)
34 wk 0 days to 36 wk 6 days — no. (%)	679 (48.7)	665 (47.7)
37 wk 0 days to 38 wk 6 days — no. (%)	239 (17.2)	250 (17.9)
Estimated fetal weight — g†		
First twin	2238±424	2238±419
Second twin	2223±413	2232±422
Chorionicity — no. (%)‡		
Dichorionic and diamniotic	961 (69.0)	970 (69.6)
Monochorionic and diamniotic	334 (24.0)	326 (23.4)
Unknown	98 (7.0)	97 (7.0)
Not in labor at randomization — no./total no. (%)	1190/1392 (85.5)	1159/1393 (83.2)
Membranes ruptured at randomization — no. (%)	83 (6.0)	76 (5.5)
National perinatal mortality in mother's country of residence — no. (%)§		
<15 deaths/1000 births	724 (52.0)	730 (52.4)
15–20 deaths/1000 births	596 (42.8)	591 (42.4)
>20 deaths/1000 births	73 (5.2)	72 (5.2)

* Plus–minus values are means ±SD. There were no significant between-group differences with respect to any of the baseline variables.

† Data were missing for the following characteristics: estimated fetal weight of the first twin (for two women in the planned-cesarean-delivery group and for two in the planned-vaginal-delivery group) and estimated fetal weight of the second twin (for two women in the planned-cesarean-delivery group and for one in the planned-vaginal-delivery group).

‡ Chorionicity was determined by means of ultrasonography.

§ Countries included in the study that had fewer than 15 deaths per 1000 births were Australia, Belgium, Canada, Chile, Croatia, Estonia, Germany, Greece, Hungary, Israel, the Netherlands, Oman, Poland, Qatar, Romania, Serbia, Spain, the United Kingdom, the United States, and Uruguay; those with 15 to 20 deaths per 1000 births were Argentina, Brazil, and Jamaica; and those with more than 20 deaths per 1000 births were Egypt and Jordan.

1392 women (2782 fetuses or infants) in the planned-vaginal-delivery group (Fig. 1).

Baseline characteristics were similar in the two study groups (Table 1). Most women (82.4%) underwent randomization between 32 weeks 0 days and 36 weeks 6 days of gestation.

Table 2 shows the labor and delivery outcomes for all women. Of the 1393 women randomly assigned to planned cesarean section, 89.9% had a cesarean section for the delivery of both fetuses or infants, 0.8% had a combined vaginal–cesarean delivery, and 9.3% delivered both twins vaginally. Of the 1263 cesarean sections (90.7%

of women) in this group, 748 (59.2%) were performed before labor. For women randomly assigned to planned vaginal delivery, 56.2% delivered both twins vaginally, and 4.2% had a combined vaginal–cesarean delivery. The remaining women (39.6%) had a cesarean section for both twins. Of the 610 cesarean sections (43.8% of women), 412 (67.5%) were performed during labor.

The time from randomization to delivery was shorter in the planned-cesarean-delivery group than in the planned-vaginal-delivery group (mean days, 12.4 vs. 13.3; P=0.04). The mean gestational age at delivery was lower in

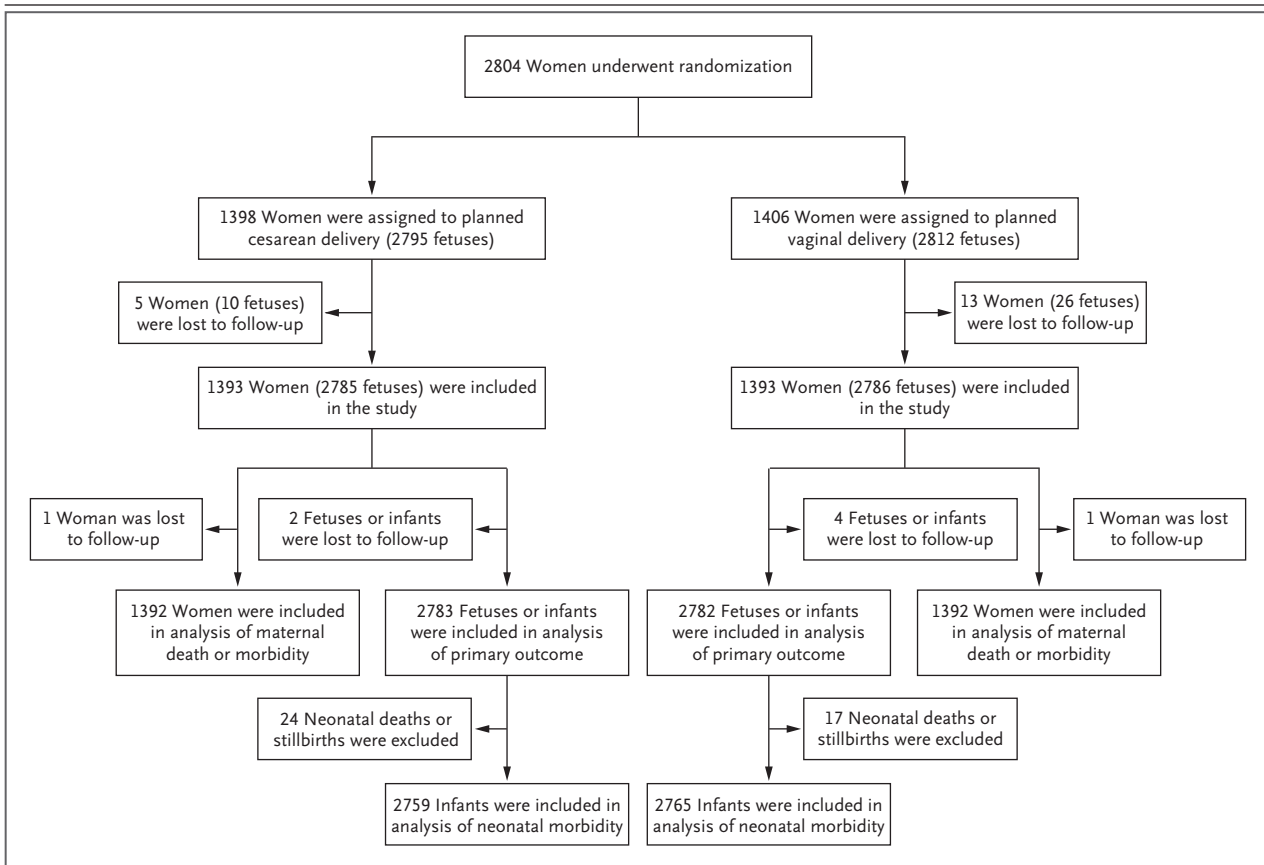


Figure 1. Randomization, Enrollment, and Outcome Data.

Between December 13, 2003, and April 4, 2011, the study enrolled 2804 women at 106 centers in 25 countries. One woman in the planned-cesarean-delivery group had a singleton pregnancy that had been thought to be a twin pregnancy during ultrasonographic examination at randomization.

the planned-cesarean-delivery group than in the planned-vaginal-delivery group ($P=0.01$).

The characteristics of labor and delivery for women having labor and for women having a vaginal delivery are provided in Table S4 in the Supplementary Appendix. For 95.2% of the women who were assigned to the planned-vaginal-delivery group and who had a vaginal delivery for the first twin, an experienced obstetrician, according to our a priori definition, was present at the time of vaginal delivery.

Table 3 shows the outcomes involving fetal and neonatal death and serious neonatal morbidity. The frequency of the composite primary outcome did not differ significantly between the planned-cesarean-delivery group and the planned-vaginal-delivery group (2.2% and 1.9%, respectively; odds ratio with planned cesarean delivery, 1.16; 95% confidence interval [CI], 0.77 to 1.74; $P=0.49$). Adding the stratification vari-

ables to the model did not materially change the result (odds ratio, 1.16; 95% CI, 0.77 to 1.74; $P=0.49$). The only stratification variable that was significantly related to the primary outcome was gestational age at randomization (odds ratio for 35 weeks 0 days to 36 weeks 6 days vs. 37 weeks 0 days to 38 weeks 6 days of gestation, 1.83; and odds ratio for 32 weeks 0 days to 33 weeks 6 days vs. 37 weeks 0 days to 38 weeks 6 days, 3.36; $P<0.001$ for the overall comparison).

There was no significant difference between the planned-cesarean-delivery and planned-vaginal-delivery groups in the frequency of the maternal composite outcome (7.3% and 8.5%, respectively; $P=0.29$) (Table 4). All adverse events documented during the trial were among the predefined measures of morbidity composing the morbidity component of the primary outcome; no other adverse outcomes were reported to the data and safety monitoring board.

Table 2. Characteristics of Labor and Delivery for All Pregnancies.*

Characteristic	Planned Cesarean Delivery (N = 1393)	Planned Vaginal Delivery (N = 1393)
Mode of delivery — no./total no. (%)		
Cesarean for both†	1252/1392 (89.9)	551/1393 (39.6)
Vaginal and cesarean	11/1392 (0.8)	59/1393 (4.2)
Vaginal for both	129/1392 (9.3)	783/1393 (56.2)
Timing of cesarean section — no./total no. (%)		
Before the onset of labor	748/1391 (53.8)	196/1391 (14.1)
During labor	514/1391 (37.0)	412/1391 (29.6)
No cesarean section	129/1391 (9.3)	783/1391 (56.3)
Presentation at delivery — no./total no. (%)		
Both twins in cephalic presentation	798/1391 (57.4)	845/1393 (60.7)
First twin in cephalic presentation and second twin in noncephalic presentation	542/1391 (39.0)	507/1393 (36.4)
First twin in noncephalic presentation and second twin in cephalic or noncephalic presentation	51/1391 (3.7)	41/1393 (2.9)
Gestational age at delivery of first twin‡		
Mean — wk	36.7±1.5	36.8±1.5
32 wk 0 days to 33 wk 6 days — no./total no. (%)	88/1392 (6.3)	66/1392 (4.7)
34 wk 0 days to 36 wk 6 days — no./total no. (%)	582/1392 (41.8)	581/1392 (41.7)
37 wk 0 days to 38 wk 6 days — no./total no. (%)	694/1392 (49.9)	696/1392 (50.0)
≥39 wk 0 days — no./total no. (%)	28/1392 (2.0)	49/1392 (3.5)
Time from randomization to delivery of first twin — days	12.4±12.0	13.3±12.3
Interval between deliveries — min	3.6±9.3	10.0±16.7
Use of antenatal glucocorticoids after randomization — no./total no. (%)	179/1391 (12.9)	152/1393 (10.9)
Use of anesthesia or analgesia — no./total no. (%)§		
Regional	1226/1323 (92.7)	867/996 (87.0)
General	86/1323 (6.5)	53/996 (5.3)
Other	22/1323 (1.7)	109/996 (10.9)
Chorionicity at birth — no./total no. (%)¶		
Dichorionic and diamniotic	1016/1390 (73.1)	1035/1391 (74.4)
Monochorionic and diamniotic	346/1390 (24.9)	324/1391 (23.3)
Monochorionic and monoamniotic	3/1390 (0.2)	1/1391 (0.1)
Unknown	25/1390 (1.8)	31/1391 (2.2)

* Plus-minus values are means ±SD. There were no significant between-group differences, except for gestational age at delivery (P=0.01), time from randomization to delivery of first twin (P=0.04), and interval between deliveries (P<0.001). Data were missing for the following characteristics: time from randomization to delivery of first twin (for two women in the planned-cesarean-delivery group and for one in the planned-vaginal-delivery group) and interval between deliveries (for two women in the planned-cesarean-delivery group).

† Data include one singleton pregnancy that had been thought to be a twin pregnancy during ultrasonographic examination at randomization.

‡ Delivery between 37 weeks 5 days and 38 weeks 6 days of gestation occurred in 396 of 1392 women (28.4%) in the planned-cesarean-delivery group and in 411 of 1392 (29.5%) in the planned-vaginal-delivery group.

§ Women could have received more than one type of anesthesia or analgesia.

¶ Chorionicity was confirmed by means of pathological examination at birth, with the following results: dichorionic and diamniotic (in 785 women in the planned-cesarean-delivery group and in 768 in the planned-vaginal-delivery group), monochorionic and diamniotic (in 235 in the planned-cesarean-delivery group and in 212 in the planned-vaginal-delivery group), and monochorionic and monoamniotic (in 3 in the planned-cesarean-delivery group).

Table 3. Fetal or Neonatal Outcomes.

Outcome	Planned Cesarean Delivery	Planned Vaginal Delivery	Odds Ratio (95% CI)	P Value
Fetal or neonatal death or serious neonatal morbidity				
No. of fetuses or infants included in analysis	2783	2782		
Composite primary outcome — no. (%) [*]	60 (2.2)	52 (1.9)	1.16 (0.77–1.74)	0.49
Gestational age at randomization — no./total no. (%)				
32 wk 0 days to 33 wk 6 days [†]	32/948 (3.4)	26/956 (2.7)	1.25 (0.70–2.24)	
34 wk 0 days to 36 wk 6 days	26/1358 (1.9)	19/1326 (1.4)	1.34 (0.71–2.54)	
37 wk 0 days to 38 wk 6 days	2/477 (0.4)	7/500 (1.4)	0.30 (0.06–1.43)	
Death — no. (%) [‡]				
Fetal death				
Before the onset of labor	11 (0.4)	8 (0.3)		
During delivery	0	1 (<0.1)		
Unknown	2 (0.1)	0		
Neonatal death				
11 (0.4)		8 (0.3)		
Serious neonatal morbidity — no. (%) [‡]	36 (1.3)	35 (1.3)		
Neonatal morbidity, excluding death of either twin				
No. of infants included in analysis	2759	2765		
Birth trauma — no. (%)				
Long-bone fracture [‡]	0	4 (0.1)		
Other bone fracture	1 (<0.1)	1 (<0.1)		
Facial-nerve injury at 72 hr of age or at discharge [‡]	0	1 (<0.1)		
Intracerebral hemorrhage [‡]	3 (0.1)	1 (<0.1)		
Apgar score <4 at 5 min — no. (%) [‡]	2 (0.1)	7 (0.3)		
Abnormal level of consciousness — no. (%)				
Coma [‡]	0	1 (<0.1)		
Stupor or decreased response to pain [‡]	2 (0.1)	0		
Hyperalert, drowsy, or lethargic	9 (0.3)	7 (0.3)		
≥2 Seizures within 72 hr after birth — no. (%) [‡]	3 (0.1)	3 (0.1)		
Assisted ventilation for ≥24 hr by means of endotracheal tube, inserted within 72 hr after birth — no. (%) [‡]	27 (1.0)	17 (0.6)		
Neonatal sepsis within 72 hours after birth — no. (%) [‡]	1 (<0.1)	2 (0.1)		
Necrotizing enterocolitis — no. (%) [§]	1 (<0.1)	3 (0.1)		
Cystic periventricular leukomalacia — no. (%) [‡]	2 (0.1)	0		

* The composite primary outcome was fetal or neonatal death or serious neonatal morbidity. The probabilities of interaction between treatment group and baseline variables for the composite primary outcome were as follows: parity (0 vs. ≥1; P=0.23); gestational age at randomization (32 weeks 0 days to 33 weeks 6 days, 34 weeks 0 days to 36 weeks 6 days, or 37 weeks 0 days to 38 weeks 6 days; P=0.18); maternal age (<30 years vs. ≥30 years; P=0.63); presentation of second twin (cephalic vs. noncephalic; P=0.51); chorionicity (dichorionic vs. monochorionic; P=0.15); and national perinatal mortality in the mother's country of residence (<15 deaths per 1000 births, 15 to 20 deaths per 1000 births, or >20 deaths per 1000 births; P=0.50). There were no infants with spinal cord injury, basal or depressed skull fracture, subdural hematoma, meningitis, grade 3 or 4 intraventricular hemorrhage, or bronchopulmonary dysplasia in either group. CI denotes confidence interval.

[†] Two infants (from one pregnancy) whose mother underwent randomization at 31 weeks of gestational age were included in the gestational-age category of 32 to 33 weeks.

[‡] This outcome was a component of the composite primary outcome.

Table 4. Maternal Outcomes.

Outcome	Planned Cesarean Delivery	Planned Vaginal Delivery	Odds Ratio (95% CI)	P Value
Maternal death or serious maternal morbidity				
No. of women included in the analysis	1392	1392		
Death or serious maternal morbidity — no. (%)	102 (7.3)	118 (8.5)	0.86 (0.65–1.13)	0.29
Death — no. (%)*	1 (0.1)	1 (0.1)		
Serious maternal morbidity, excluding death†				
No. of women included in the analysis	1391	1391		
Hemorrhage — no. (%)‡§	84 (6.0)	108 (7.8)		
Blood loss ≥1500 ml — no. (%)	26 (1.9)	32 (2.3)		
Blood transfusion — no. (%)	66 (4.7)	75 (5.4)		
Dilation and curettage of uterus after delivery — no. (%)	12 (0.9)	29 (2.1)		
Laparotomy — no. (%)	10 (0.7)	5 (0.4)		
Genital tract injury — no. (%)	3 (0.2)	5 (0.4)		
Perineal third- or fourth-degree tear involving anal sphincter — no. (%)	0	4 (0.3)		
Thromboembolism requiring anticoagulant therapy — no. (%)	5 (0.4)	2 (0.1)		
Infection, excluding wound infection — no. (%)¶	25 (1.8)	18 (1.3)		
Wound infection — no. (%)§	27 (1.9)	18 (1.3)		
Infection requiring prolongation of hospital stay	9 (0.6)	5 (0.4)		
Infection requiring readmission to hospital	5 (0.4)	4 (0.3)		
Infection requiring repeated treatment as an outpatient	14 (1.0)	9 (0.6)		
Wound dehiscence or breakdown — no. (%)	20 (1.4)	12 (0.9)		
Major serious or life-threatening medical illness — no. (%)§	6 (0.4)	1 (0.1)		
Acute respiratory distress syndrome	1 (0.1)	0		
Disseminated intravascular coagulation	2 (0.1)	0		
Amniotic-fluid embolism	1 (0.1)	0		
Bowel obstruction or paralytic ileus requiring nasogastric suction	3 (0.2)	0		
Other serious or life-threatening illness	1 (0.1)	1		

* The causes of maternal deaths were cardiac failure during cesarean section due to a preexisting cardiomyopathy (in one woman in the planned-cesarean-delivery group) and retroperitoneal hematoma after a massive postpartum hemorrhage requiring hysterectomy after vaginal delivery (in one woman in the planned-vaginal-delivery group).

† All measures of serious maternal morbidity listed were components of the composite maternal outcome. There were no cases of broad-ligament hematoma confirmed by means of ultrasonography or other report or fistula involving the genital tract.

‡ Data were missing for one woman in the planned-cesarean-delivery group and for four women in the planned-vaginal-delivery group.

§ More than one subcategory may apply.

¶ Infection (excluding wound infection) was defined as a temperature of more than 38.5°C on two or more occasions at least 24 hours apart, not including the first 24 hours after birth; pneumonia confirmed by means of radiography; or sepsis confirmed by means of blood culture.

|| Other serious or life-threatening illnesses included generalized seizure (in one woman in the planned-cesarean-delivery group) and acute fatty liver of pregnancy (in one woman in the planned-vaginal-delivery group).

SUBGROUP ANALYSES

There were no significant interactions for the primary outcome between treatment group and parity (0 vs. ≥ 1 ; $P=0.23$), gestational age at randomization (32 weeks 0 days to 33 weeks 6 days, 34 weeks 0 days to 36 weeks 6 days, or 37 weeks 0 days to 38 weeks 6 days; $P=0.18$), maternal age (<30 years vs. ≥ 30 years; $P=0.63$), presentation of the second twin (cephalic vs. noncephalic; $P=0.51$), chorionicity (dichorionic vs. monochorionic; $P=0.15$), or the national perinatal mortality in the mother's country of residence (<15 deaths per 1000 births, 15 to 20 deaths per 1000 births, or >20 deaths per 1000 births; $P=0.50$).

The second twin was more likely than the first twin to have the primary outcome (odds ratio, 1.90; 95% CI, 1.34 to 2.69, $P<0.001$). However, the interaction between treatment group and birth order was not significant (odds ratio for the first twin, 1.30; odds ratio for the second twin, 1.09; $P=0.63$).

DISCUSSION

In this large, randomized trial comparing delivery strategies for twins between 32 and 38 weeks of gestation, planned cesarean section did not reduce the risk of fetal or neonatal death or serious neonatal morbidity, as compared with planned vaginal delivery (with cesarean section if medically indicated). We found a higher risk of an adverse perinatal outcome for the second twin than for the first twin, as others have found⁸⁻¹⁰; however, planned cesarean section did not reduce this risk.

There has been controversy regarding the safest method for the delivery of twins at or near term. A policy of planned cesarean section for the delivery of twins gained support after the publication of the Term Breech Trial, which showed that planned cesarean delivery was associated with a reduced risk of an adverse perinatal outcome in the case of a full-term pregnancy with the fetus in the breech presentation.^{17,22} Further support for planned cesarean section has come from large cohort studies of twins showing a reduced risk of an adverse perinatal outcome with elective cesarean section, as compared with vaginal delivery or emergency cesarean section.^{7,8,10} There are several possible reasons why our results differ from previous observational data: we

avoided selection bias, we ensured the presence of an experienced obstetrician at delivery, and many of the twins in our study were born preterm.

We did not find any significant interactions between treatment group and baseline variables, suggesting no significant benefit of planned cesarean delivery for any subgroup tested. However, our study was not powered for these subgroup analyses. Further study may be warranted for the gestational-age subgroup of 37 to 38 weeks, particularly given the limited number of infants in this subgroup.

We did not find that planned cesarean delivery was associated with a higher or lower risk of maternal death or serious maternal morbidity than planned vaginal delivery. This finding may be explained in part by the high rate of cesarean section ($>40\%$) in the planned-vaginal-delivery group, with most of these deliveries occurring during labor.

The strengths of our trial include the randomized design and use of central randomization, the large size of the study (106 participating centers in 25 countries), and a high rate of follow-up. Any possible unblinding of outcome assessors is unlikely to have introduced bias because the criteria for the morbidity outcomes were clearly defined. However, our findings are generalizable only to centers that can provide the obstetrical management specified by the protocol, including the ability to perform an emergency cesarean section within 30 minutes if necessary. On the basis of the 95% confidence interval around the odds ratio for the primary outcome, our results are consistent with no more than a 23% reduction and no more than a 74% increase in the odds of fetal or neonatal death or serious neonatal morbidity with planned cesarean delivery, as compared with planned vaginal delivery.

In conclusion, we found no benefits of planned cesarean section, as compared with planned vaginal delivery, for the delivery of twins between 32 and 38 weeks of gestation, if the first twin was in the cephalic presentation.

Supported by a grant (63164) from the Canadian Institutes of Health Research.

No potential conflict of interest relevant to this article was reported.

Disclosure forms provided by the authors are available with the full text of this article at NEJM.org.

We thank all the participants in the Twin Birth Study and the staff at the Centre for Mother, Infant, and Child Research for their hard work and dedication.

REFERENCES

1. Wilcox LS, Kiely JL, Melvin CL, Martin MC. Assisted reproductive technologies: estimates of their contribution to multiple births and newborn hospital days in the United States. *Fertil Steril* 1996;65:361-6.
2. Bergh T, Ericson A, Hillensjö T, Nygren KG, Wennerholm UB. Deliveries and children born after in-vitro fertilisation in Sweden 1982-95: a retrospective cohort study. *Lancet* 1999;354:1579-85.
3. Kiely JL. The epidemiology of perinatal mortality in multiple births. *Bull N Y Acad Med* 1990;66:618-37.
4. Ghai V, Vidyasagar D. Morbidity and mortality factors in twins: an epidemiologic approach. *Clin Perinatol* 1988;15:123-40.
5. Smith GCS, Pell JP, Dobbie R. Birth order, gestational age, and risk of delivery related perinatal death in twins: retrospective cohort study. *BMJ* 2002;325:1004-9.
6. Rabinovici J, Barkai G, Reichman B, Serr DM, Mashiach S. Randomized management of the second nonvertex twin: vaginal delivery or cesarean section. *Am J Obstet Gynecol* 1987;156:52-6.
7. Hoffmann E, Oldenburg A, Rode L, Tabor A, Rasmussen S, Skibsted L. Twin births: cesarean section or vaginal delivery? *Acta Obstet Gynecol Scand* 2012;91:463-9.
8. Smith GC, Shah I, White IR, Pell JP, Dobbie R. Mode of delivery and the risk of delivery-related perinatal death among twins at term: a retrospective cohort study of 8073 births. *BJOG* 2005;112:1139-44.
9. Smith GC, Fleming KM, White IR. Birth order of twins and risk of perinatal death related to delivery in England, Northern Ireland, and Wales, 1994-2003: retrospective cohort study. *BMJ* 2007;334:576-8.
10. Armson BA, O'Connell C, Persad V, Joseph KS, Young DC, Baskett TF. Determinants of perinatal mortality and serious neonatal morbidity in the second twin. *Obstet Gynecol* 2006;108:556-64.
11. Lee HC, Gould JB, Boscardin WJ, El-Sayed YY, Blumenfeld YJ. Trends in cesarean delivery for twin births in the United States: 1995-2008. *Obstet Gynecol* 2011;118:1095-101.
12. Arabin B, Kyvernitakis I, Liao A, Zugaib M. Trends in cesarean delivery for twin births in the United States: 1995-2008. *Obstet Gynecol* 2012;119:657-8.
13. Cheung YB, Yip P, Karlberg J. Mortality of twins and singletons by gestational age: a varying-coefficient approach. *Am J Epidemiol* 2000;152:1107-16.
14. Imaizumi Y. Perinatal mortality in twins and factors influencing mortality in Japan, 1980-98. *Paediatr Perinat Epidemiol* 2001;15:298-305.
15. Puissant F, Leroy F. A reappraisal of perinatal mortality factors in twins. *Acta Genet Med Gemellol (Roma)* 1982;31:213-9.
16. Persad VL, Baskett TF, O'Connell CM, Scott HM. Combined vaginal-cesarean delivery of twin pregnancies. *Obstet Gynecol* 2001;98:1032-7.
17. Hannah ME, Hannah WJ, Hewson SA, Hodnett ED, Saigal S, Willan AR. Planned caesarean section versus planned vaginal birth for breech presentation at term: a randomised multicentre trial. *Lancet* 2000;356:1375-83.
18. Su M, McLeod L, Ross S, et al. Factors associated with adverse perinatal outcome in the Term Breech Trial. *Am J Obstet Gynecol* 2003;189:740-5.
19. Pan W. Sample size and power calculations with correlated binary data. *Control Clin Trials* 2001;22:211-27.
20. Klar N, Donner A. Current and future challenges in the design and analysis of cluster randomization trials. *Stat Med* 2001;20:3729-40.
21. Neonatal and perinatal mortality country, regional and global estimates. Geneva: World Health Organization, 2004 (http://whqlibdoc.who.int/publications/2007/9789241596145_eng.pdf).
22. Hogle KL, Kilburn L, Hewson S, Gafni A, Wall R, Hannah ME. Impact of the international term breech trial on clinical practice and concerns: a survey of centre collaborators. *J Obstet Gynaecol Can* 2003;25:14-6.

Copyright © 2013 Massachusetts Medical Society.

2013 ICMJE RECOMMENDATIONS

The International Committee of Medical Journal Editors (ICMJE) has revised and renamed its Uniform Requirements. The new ICMJE Recommendations for the Conduct, Reporting, Editing and Publication of Scholarly Work in Medical Journals are available at www.icmje.org.

1. TBS Collaborative Group

Steering Committee: Jon FR Barrett (chair), Alexander C Allen, B Anthony Armson, Elizabeth V Asztalos, Scott Farrell, Amiram Gafni, Julia E Hanigsberg, Mary E Hannah, Eileen K Hutton, KS Joseph, Line Leduc, Dalah Mason, Arne Ohlsson, Nanette Okun, Susan Ross, J Johanna Sanchez, Andrew R Willan

Adjudication Committee: Alexander C Allen, B Anthony Armson, Elizabeth V Asztalos, Jon FR Barrett

Data Safety Monitoring Board: Michael Bracken (chair), Patricia Crowley, Allan Donner, Lelia Duley, Richard Ehrenkranz, Kevin Thorpe

Collaborators*: *ARGENTINA (732):* **Hospital Penna**, Bahia Blanca: Jose Luis Castaldi, Marta Susana Bertin, Yamil Partida; **Hospital Alvarez**, Buenos Aires: Diana Galimberti, Analia Messina; **Hospital Juan A Fernandez**, Buenos Aires: Liliana S Voto, Geraldine N Voto, Maria José Prieto, Fernanda Buraschi, Héctor Sexer; **Hospital Posadas**, Buenos Aires: Mario Palermo, Dolores Montes Varela; **Hospital Ramos Mejia**, Buenos Aires: Ricardo Savransky, Armando Dunaievsky; **Hospital Sarda**, Buenos Aires: Elsa Andina, Cristina Laterra, Sandra Susacasa, Maria Alejandra Frailuna, Silvina Ramirez Almansa, Maria Beatriz Barrere, Horacio García; **Hospital Angela Iglesia de Llano**, Corrientes: Mabel Rivero, Elena Elizabet Gomez, Josefina Schinini, Monica Ahlbom; **Hospital JR Vidal**, Corrientes: Jesus Daniel Aguirre; **Hospital LC Lagomaggiore**, Mendoza: Raquel de Lourdes Martín, Arturo Videla, Walter Mesas; **Hospital JM Cullen**, Santa Fe: Carlos Arias, Maria Cecilia Castagnola; **Hospital Ramon Carrillo**, Santiago del Estero: Raul Abalos Gorostiaga, Miguel Curioni; **Hospital Avellaneda**, Tucuman: Maria Mohedano, Viviana Dip, Alicia Roque, Esteban Marcos Duhalde;

AUSTRALIA (79): **Women's and Children's Hospital**, Adelaide: Jodie Dodd, Andrea Deussen, Caroline Crowther; **Mater Mothers' Hospital**, Brisbane: Glenn Gardener, Jackie Chaplin; **Monash Medical Centre**, Clayton: Danielle Wilkins; **Ipswich Hospital**, Ipswich: Kassam Mahomed, Anne Green, Robert Baade; **Logan Hospital**, Meadowbrook: Mano Haran, Ash Hanafy; **St George Hospital**, Sydney: Greg Davis, Lynne Roberts; **Toowoomba Base Hospital**, Toowoomba: Stephen Tucker, Christine Duncan; **Townsville Hospital**, Townsville: David Watson, Annemarie Lawrence;

BELGIUM (15): **Vrije Universiteit Brussel**, Brussels: Monika Laubach, Ria Breugelmans; *BRAZIL (414)*: **Botucatu Medical School**, Botucatu: Iracema Calderon, Anice Martins, Claudia Magalhães; **University of Campinas**, Campinas: Jose Guilherme Cecatti, Fernanda Garanhani Surita; **Hospital Materno Infantil**, Goiania: Luiza Rosado, Augusto Cortizo Vidal, Goianice Ribeiro de Souza; **Hospital Universitario de Jundiai**, Jundiai: Nelson Lourenço Maia Filho, Danielly Scaranello Nunes Santana; **Hospital Universitario Antonio Pedro**, Niteroi: Renato Augusto Moreira de Sa, Luciano Marcolino; **Hospital Sao Lucas**, Porto Alegre: Caio Coelho Marques, Pedro Luis Zanella, Carla Milan, Márcia Dalmolin Bollis, Gustavo Steibel; **ISCMPA-Maternidade Mario Totta**, Porto Alegre: Antonio CK Ayub, Simone Moreira; Hospital das Clinicas da UFPE, Recife: Antonio Carlos Barbosa Lima; Instituto de Medicina Integral Prof. Fernando Figueira (IMIP), Recife: Adriana Scavuzzi, Alex Sandro Rolland de Souza; University of Pernambuco, Recife: Olimpio Barbosa de Moraes Filho, Simone Angélica Leita Silva Carvalho; **Maternidade Escola da UFRJ**, Rio de Janeiro: Renato Augusto Moreira de Sa, Rita Guerios Bornia, Nancy Ribeiro da Silva; **Perinatal**, Rio de Janeiro: Renato Augusto Moreira de Sa, Renata Spinola,

Laudelino Marques Lopes; **Maternidade Escola de Vila Nova Cachoeirinha**, Sao Paulo: Nelson Sass, Henri Korkes, Elisa Chalem, Eliana Junko Morita Yokota, Miriam Ribeiro de Faria Silveira; *CANADA (260)*: **Foothills Medical Centre, 001-021**, Calgary: Stephen Wood, Leslie Miller; **IWK Health Centre**, Halifax: Lynne McLeod, B Anthony Armson, Cora Fanning; **McMaster University Medical Centre**, Hamilton: Valerie Mueller, Sandra Gregorovich, Elaine Moore; **St Joseph's Health Care**, London: Robert Gratton, Laura Kennedy; **Trillium Health Centre**, Mississauga: Peter Scheufler, Donna Reid; **SMBD Jewish General Hospital**, Montreal: Stephanie Klam, Rhona Daitchman, **Royal Columbian Hospital**, New Westminster: Duncan Farquharson, Kristy Harrison; **North Bay General Hospital**, North Bay: Ramesh Kulkarni, Rhonda Scarfone, Joanne Laplante; **Regina General Hospital**, Regina: George Carson, Suzanne Williams; **York Central Hospital**, Richmond Hill: David Rosman, Debbie Nemtean; **Royal University Hospital**, Saskatoon: Femi Olatunbosun, Kathleen Pierson; **Women's Health Centre**, St John's: Joan Crane, Donna Hutchens, **Mount Sinai Hospital**, Toronto: Nanette Okun; **Sunnybrook Health Sciences Centre**, Toronto: Arthur Zaltz, Melissa Brown; **Toronto East General**, Toronto: Melanie Ornstein, Soraya Visram, Jennifer Bordin, Hiliary Siurna, Shelly Petruskavich; **Children's & Women's Health Centre of BC**, Vancouver: Alain Gagnon, Jennifer M Lee, Ariadna Fernandez; **Lion's Gate Hospital**, Vancouver: Stephen Kaye, Kelly-Ann Haslauer; **St Paul's Hospital**, Vancouver: Geoffrey Cundiff; *CHILE (114)*: **Hospital Dr Sotero del Rio**, Puente Alto: Ricardo Gomez, Juan Pedro Kusanovic, Karla Silva Neculman; **Hospital Dr Gustavo Fricke**, Vina del Mar: Luis Leighton Valenzuela, Erika Madariaga Leiva, Juan Guillermo Romo Cabrera, Mónica Molina Ravanal, Rodrigo Schiaffino Orrego; *CROATIA (9)*: **Sveti Duh**

Hospital, Zagreb: Ratko Matijevic; *EGYPT (89)*: **Assiut University Hospital**, Assiut: Ahmad Makhoulf, Osama Saber, Tarek Abdelradey; *ESTONIA (53)*: **Tartu University Hospital - Women's Clinic**, Tartu: Fred Kirss, Kristiina Rull, Pille Vaas; *GERMANY (15)*: **CUB - Benjamin Franklin**, Berlin: Hartmut Hopp, Andreas Nonnenmacher; **CUB - Virchow Klinikum**, Berlin: Silke Michaelis; **Ludwig Maximilians University of Munich**, Munich: Uwe Hasbargen, Maria Delius; *GREECE (4)*: **Alexandra Maternity**, Athens: Aris Antsaklis, Peter Drakakis; *HUNGARY (39)*: **University of Debrecen**, Debrecen: Tamás Major, Tünde Bartha; *ISRAEL (201)*: **HaEmek Medical Center**, Afula: Raed Salim; **Ma'ayney HaYeshua Medical Center**, Bnei Brak: Linda Harel, Benny Chayen, Sima Siev; **Hillel Yaffe Medical Center**, Hadera: Mordechai Hallak, Elad Mei-Dan; **Bnai Zion Medical Center**, Haifa: Ron Gonen, Leslie Wolff; **Edith Wolfson Medical Center**, Holon: Oscar Sadan; **Holy Family Hospital**, Nazareth: Dalia Mansour-Schwake, Liana Petchinkin; **Nazareth Hospital (EMMS)**, Nazareth: Marwan Hakim; **Poriya Government Hospital**, Tiberias: Yuri Perlitz, Moshe Ben-Ami, Samuel Pansky; *JAMAICA (54)*: **University Hospital of the West Indies**, Kingston: Donnette Simms-Stewart, Monifa Wilson; *JORDAN (56)*: **Islamic Hospital**, Amman: Mazen El-Zibdeh, Lama AlFaris; *THE NETHERLANDS (63)*: **Sint Lucas Andreas Ziekenhuis**, Amsterdam: Marion Heres, Aafje Sluis; **Atrium Medical Center**, Heerlen: Frans JME Roumen, Jeannine Rinkens; **Academisch Ziekenhuis Maastricht**, Maastricht: Christine Willekes; **Maaslandziekenhuis Sittard**, Sittard: Sjaak Alleman, Simone Gordijn van Zandvoort; **Maxima Medical Centre**, Veldhoven: Martina M Porath, Corine Verhoeven, Ben Willem Mol; *OMAN (21)*: **Khoula Hospital**, Muscat: Forough Radfar, Sultana Khan; *POLAND (167)*: **Medical University of Gdansk**, Gdansk: Krzysztof

Preis, Malgorzata Swiatkowska-Freund; **Polish Mother's Memorial Hospital**, Lodz:
 Grzegorz Krasomski, Marcin Kesiak, Michael Krekora, Katarzyna Zych, Jan Wilczynski;
University School of Medical Sciences, Poznan: Grzegorz Breborowicz, Anna Dera;
 QATAR (42): **Hamad Medical Corporation**, Doha: Sajjad ur Rahman, Amal Abdullah
 Al-Jassim; ROMANIA (18): **University of Pharmacy and Medicine**, Cluj-Napoca:
 Florin Stamatian, Gabriela Caracostea; SERBIA (58): **University of Belgrade**,
 Belgrade: Miroslava Gojnic, Amira Fazlagic, Milan Perovic, Brankica Vasiljevic, Toma
 Stefanovic; SPAIN (108): **Hospital Clinic-University of Barcelona**, Barcelona: Anna
 Gonce, Sara Herrero Rodriguez, Marta Massanes; **Hospital Vall d'Hebron**, Barcelona:
 Elena Carreras Moratonas, Carlota Rodo Rodriguez, Silvia Arevalo Martinez, Elisa
 Llubra, Anna Suy Franch; **Hospital La Paz**, Madrid: Maria de la Calle, Fernando Dans,
 Marta Sancha, Sara Lopez; **Complejo Hospitalario de Toledo**, Toledo: Maria Luisa
 Canete Palomo, María Dolores Maldonado del Valle, María Nieves Rodríguez Martín,
 Carolina Lázaro-Carrasco Delgado, María Carmen Jiménez Fournier; UNITED
 KINGDOM (126): **Basildon & Thurrock University Hospital**, Basildon: Dale Ojutiku,
 Maxwell Masuku, Kerry Goodsell, Donna Southam; **Bradford Royal Infirmary**,
 Bradford: Derek Tuffnell, Tracey Germaine, Rebecca Palethorpe, Diane Farrar, Janet
 Wright; **Queen Elizabeth Hospital**, King's Lynn: Hamed Al-Taher, Helen Meehan;
Liverpool Women's Hospital, Liverpool: Leanne Bricker, Michelle Dower, Gillian
 Houghton, Angela Pascall, Heather Longworth; **Lewisham Hospital**, London: Ashis
 Sau; **Nottingham City Hospital**, Nottingham: James Thornton, Joanne Fisher,
 Mohammed Houda, Andy Simm, George Bugg; **Queen's Medical Centre**, Nottingham:
 Ruta Deshpande, Yvette Davis, Fiona Holloway, George Bugg; **Derriford Hospital**,

Plymouth: Ross Welch, Heidi Hollands; **University Hospital of North Staffordshire**,
Stoke-on-Trent: Peter Young; **City Hospitals Sunderland NHS Foundation Trust**,
Sunderland: Kim Hinshaw, Amanda Bargh, Dawn Edmundson, Helen Cameron;
URUGUAY (10): **Pereira Rossell Hospital**, Montevideo: Justo Alonso, Alfonso Garcia
Austt, Alejandra Ortiz; *USA (57)*: **University of South Carolina**, Columbia: Judith
Burgis, Stanette Brown, Anthony Gregg; **University of Iowa Hospitals and Clinics**,
Iowa City: Kristi Borowski, Diedre Fleener; **Jamaica Hospital Medical Center**,
Jamaica: John Deaver, Melanie Summersille; **Texas Tech UHSC**, Lubbock: Christine
Aronoff, Kimberly Bland; **University of Miami**, Miami: Eftichia Kontopoulos, Yvette
Rivero; **East Bay Perinatal Medical Associates**, Oakland: Stuart M Lovett, Shana
Zatinsky, Mary Diogo; **Maricopa Medical Center**, Phoenix: Dean V Coonrod, Blanca
Flor Jimenez.

*The number of women recruited in each country is specified in brackets.

Centre for Mother, Infant, and Child Research, Toronto, Ontario, Canada: Sunny Chan,
Sheila A Hewson, Trinh Hoac, Christine Kowal, Kathryn Mangoff, Sonya Mergler,
Michael Shi